

# Kaiser Permanente Oakland Internal Medicine Residency

## *Masters in Public Health Track*

Joan C. Lo, MD

Research Scientist, Kaiser Permanente (KP) Division of Research  
Assistant Program Director, Internal Medicine Residency, KP Oakland



1

1

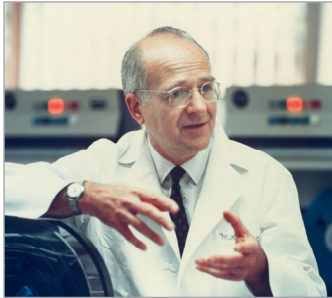
## KAISER PERMANENTE OAKLAND HISTORY

- 1942 – Kaiser Permanente (KP) opened in Oakland, CA
- 1946 – KP Internal Medicine Residency Program began



2

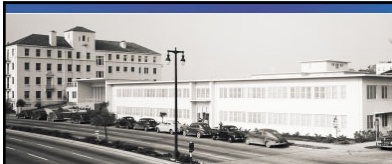
## Early KP Physician Leadership in Research & Education



- Morris Collen, MD (1913-2014)
  - First Residency Program Director in 1946
  - Founded the Kaiser Permanente Division of Research in 1961
  - Internationally recognized as the “Father of Medical Informatics”

3

3



Oakland Hospital and first expansion, 1944



Oakland Hospital in 1961, with new Pediatric Wing



New Oakland Hospital in 1972

## During early years of growth...

- Research and education were high priorities, as they stimulated high quality of care and advancement of medicine.
- ‘Academic affiliation’ for residency program via master’s degree training was considered but was not logistically possible at the time.
- Model of prepaid healthcare in an integrated healthcare delivery system was pioneering.

4

## KAISER PERMANENTE A national leader in population health



5



5

## Kaiser Permanente Graduate Medical Education

“We provide academic training within a world-class health care organization for a large patient population. Our programs foster the professional and personal development of residents in an integrated, scholarly, and supportive, managed-care environment. We follow patients longitudinally through all aspects of the continuum of care, giving trainees exposure to principles of population management, evidence-based medicine, and team-based chronic care – the cornerstones of Kaiser Permanente medicine . . .”

[residency-nca.kaiserpermanente.org/](http://residency-nca.kaiserpermanente.org/)

6

6

# Kaiser Permanente Oakland IM-MPH Track

In 2008, GME leaders partnered with UC Berkeley School of Public Health to develop a Y4 MPH track

2 medical students match each year into the Internal Medicine – MPH track

Began with Internal Medicine, followed by Pediatrics  
Funded by the KPNC Community Health Program

7

7

# East Bay Academic Leaders for over 75 Years

IM Residency, KP Oakland

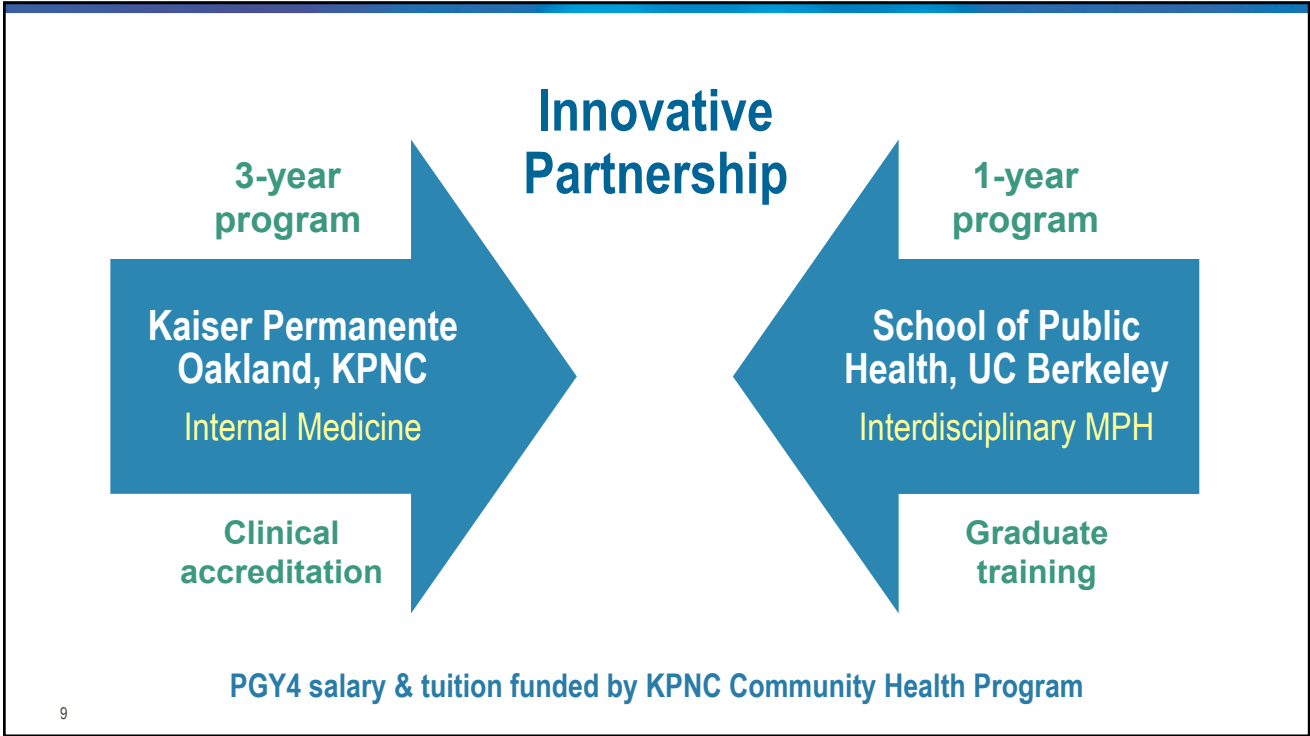


School of Public Health, UC Berkeley



8

8



9

Internal Medicine – MPH Track: First 3 years		
YEAR 1	YEAR 2	YEAR 3
<b>CLINICAL ROTATIONS</b>		
<b>Research, QI, and Education projects</b>	<b>Clinical and Health Disparities Research</b>	
	<b>Quality Improvement (QI), Patient Safety</b>	
	<b>Health Policy or Global Health Electives</b>	
<b>Annual Interdisciplinary MPH Meeting: resident-faculty networking</b>		

10

10

## Year 4 is primarily focused on MPH Training

### 11-month Graduate Program

- July – June (summer, fall, spring courses)
- Longitudinal weekly MPH Seminar course
- 9-month MPH Capstone Project



**Abundant PGY4 clinical options are available**  
Primary Care, Specialty, and Hospital-based clinical work and teaching is tailored to individual career path

11

11

## UC Berkeley 'Interdisciplinary' MPH Program

Accelerated 11-month program for mature scholars

Diverse cultural, professional backgrounds, PH goals

Provides a multidisciplinary approach to PH practice

Tailored to their career goals or Minor in a **Specialty Area**

Multicultural Health

Aging

Maternal, Child, Adolescent Health

Global Health

Public Health Nutrition

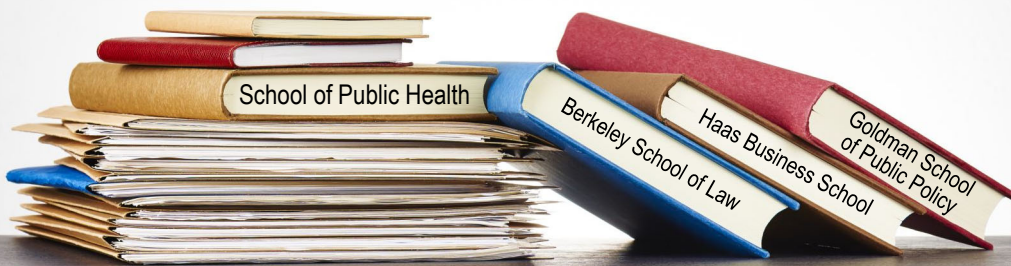
Food Systems

12

12

## Unique Graduate Course Offerings

PH 204A	Mass Communication in Public Health
PH 132	Artificial Intelligence for Health & Healthcare
PH 219C	Outbreak Investigations
PH 220E	Global Health Policy
PH 226A	Health Economics



13

## Establish a Strong Quantitative Foundation



- Epidemiologic Methods
- Probability & Statistics
- R Statistical Programming
- Optional Electives
  - Multivariable Statistics
  - Causal Inference
  - Intervention Trial Design

14

14

# 11-month Interdisciplinary MPH Seminar



- 1) Mixed Methods Research
- 2) Survey Design in Public Health
- 3) Ethics in Public Health Research
- 4) Conducting a Policy Review
- 5) Media Advocacy, Leadership
- 6) Project Workshops, Presentation

15

15



16



## The PGY4 MPH is an Impactful Training Year

- ✓ Develop PH, leadership, and community skills
- ✓ Practical insights in addressing real PH issues
- ✓ Curricular flexibility – individualized approach
- ✓ Choose courses across UC Berkeley campus



SUMMER	FALL	WINTER	SPRING
Meet w/ Advisors	Plan Project, IRB	Conduct Project	Present Project

17

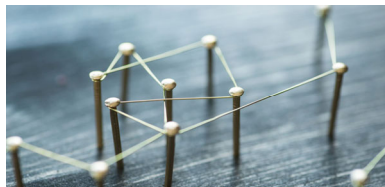
17

## Types of MPH Projects led by IM-MPH Residents



### PH Evaluation

- Farmers' Market utilization
- Cardiac arrest, field outcomes
- Surgical decisions in geriatrics



### Policy Analysis

- State policy for mammography
- Hospice reimbursement, CMS
- High deductible under the ACA



### Developing Tools

- Geriatric nutrition curriculum
- Informing a Smartphone App
- Spatial mapping techniques

18

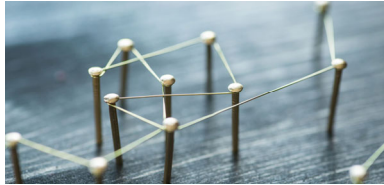
18

## Types of MPH Projects led by IM-MPH Residents



### Epidemiology

- Dementia/COVID-19 outcomes
- Comorbidities and liver disease
- Medication adherence in SLE



### Needs Assessment

- Super-utilizers in Medicaid
- Nutrition education in GME
- Refugee food insecurity



### Infectious Disease

- HIV infection in Black men
- STD rates in COVID-19 era
- Hepatitis B vaccination rates

19

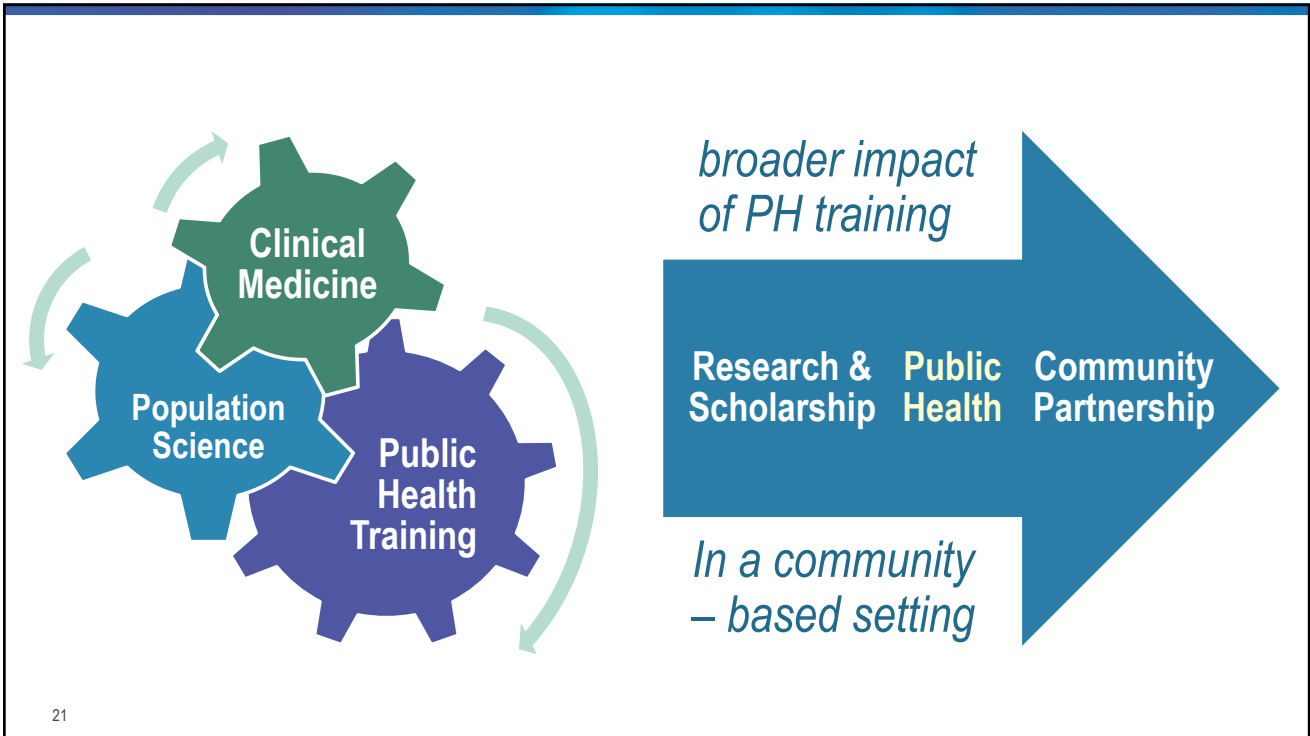
19

**MPH COURSES**

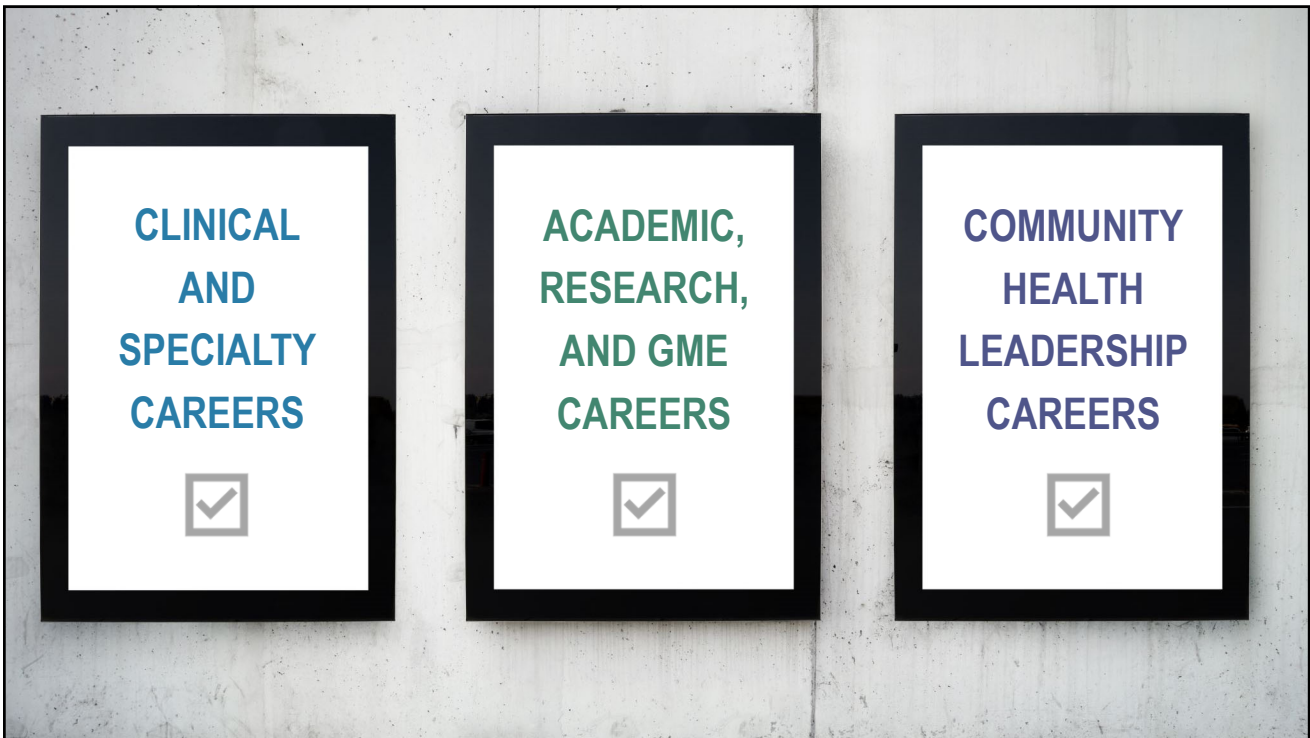
**MPH PROJECT**

**PGY4 bridges:**  
 Residency to Fellowship  
 Residency to Faculty Career  
 Residency to Leadership Career

20



21



22

## KP Oakland IM-MPH Track: Other Strengths

Physician research leadership & mentorship

Public health education + real world practice

Health issues are relevant to local community

Develop Leaders in Medicine & Public Health

MPH in 4<sup>th</sup> year aligns work with career goals

23

23

## Limitations and Challenges

- MPH in PGY4 is high yield but opportunities are missed in PGY1-3
- Earlier research support & public health training strengthens PGY4
- Lack of direct funding for research mentors & their research studies
- NIH / other funding can support trainee FTE and/or training, but few support public health focused research *during* clinical training years

24

24

## Public Health in GME – Future Directions ?

- PGY4 salary and MPH tuition provide just the basic needs
- Future considerations, especially for earlier training years, include:
  - Strategic programming (e.g., funded rotations and field work)
  - Research supplements (PI-mentor, project, trainee identified)
  - Find innovative ways to support faculty research mentors
  - Public health immersion experiences during medical school
  - Increase visibility with ACGME, AAMC, and other institutions

25

25

## Acknowledgements

- Thomas Baudendistel, MD (KP Oakland Internal Medicine Residency Director)
- Anke Hemmerling, MD PhD MPH (UC Berkeley Interdisciplinary MPH Director)
- KPNC Graduate Medical Education
- KPNC Community Health Program
- University of California Berkeley, School of Public Health
- KPNC Division of Research & The Permanente Medical Group

26

 KAISER PERMANENTE®

26