



Healthy Start: Eliminating Disparities in Perinatal Health (HS)

Update to the Advisory Committee on Infant and Maternal Mortality (ACIMM)

June 26, 2024

Benita Baker, MS

**Chief, Healthy Start Branch, Division of Healthy Start and Perinatal Services (DHSPS)
Maternal and Child Health Bureau (MCHB)**

Vision: Healthy Communities, Healthy People



Healthy Start (HS) Update to ACIMM

- I. Purpose and Goals of Healthy Start
- II. Fiscal Year (FY) 2024 Competition: Overview of Awards
- III. Overview of FY 2024 Healthy Start
- IV. Summary of Key Changes and Areas of Increased Emphasis



Healthy Start – Purpose and Goals

Purpose

The purpose of Healthy Start is to improve health outcomes before, during and after pregnancy and reduce the well-documented racial/ethnic differences in rates of infant death and adverse perinatal outcomes

Goals



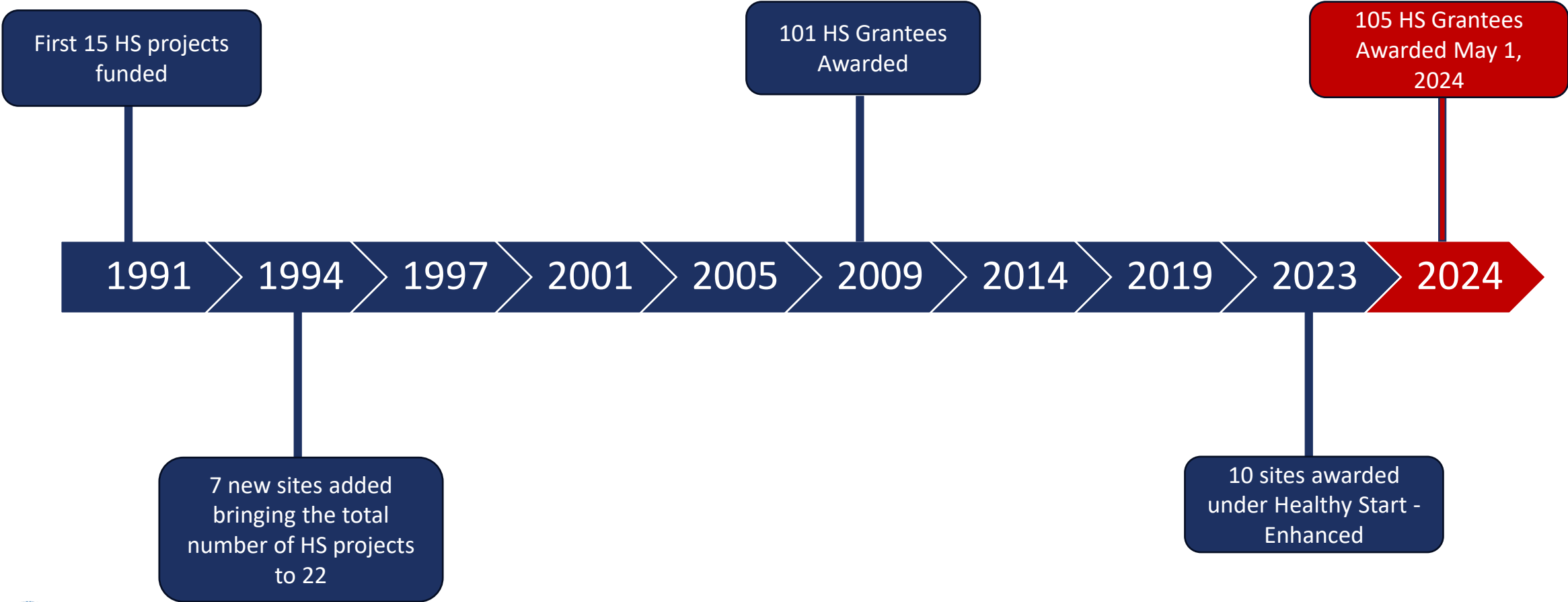
Reduce infant mortality rates in the U.S.



Decrease disparities in infant mortality and poor perinatal health outcomes



Healthy Start Competitions



Learn more at <https://mchb.hrsa.gov>



FY 2024 Competition

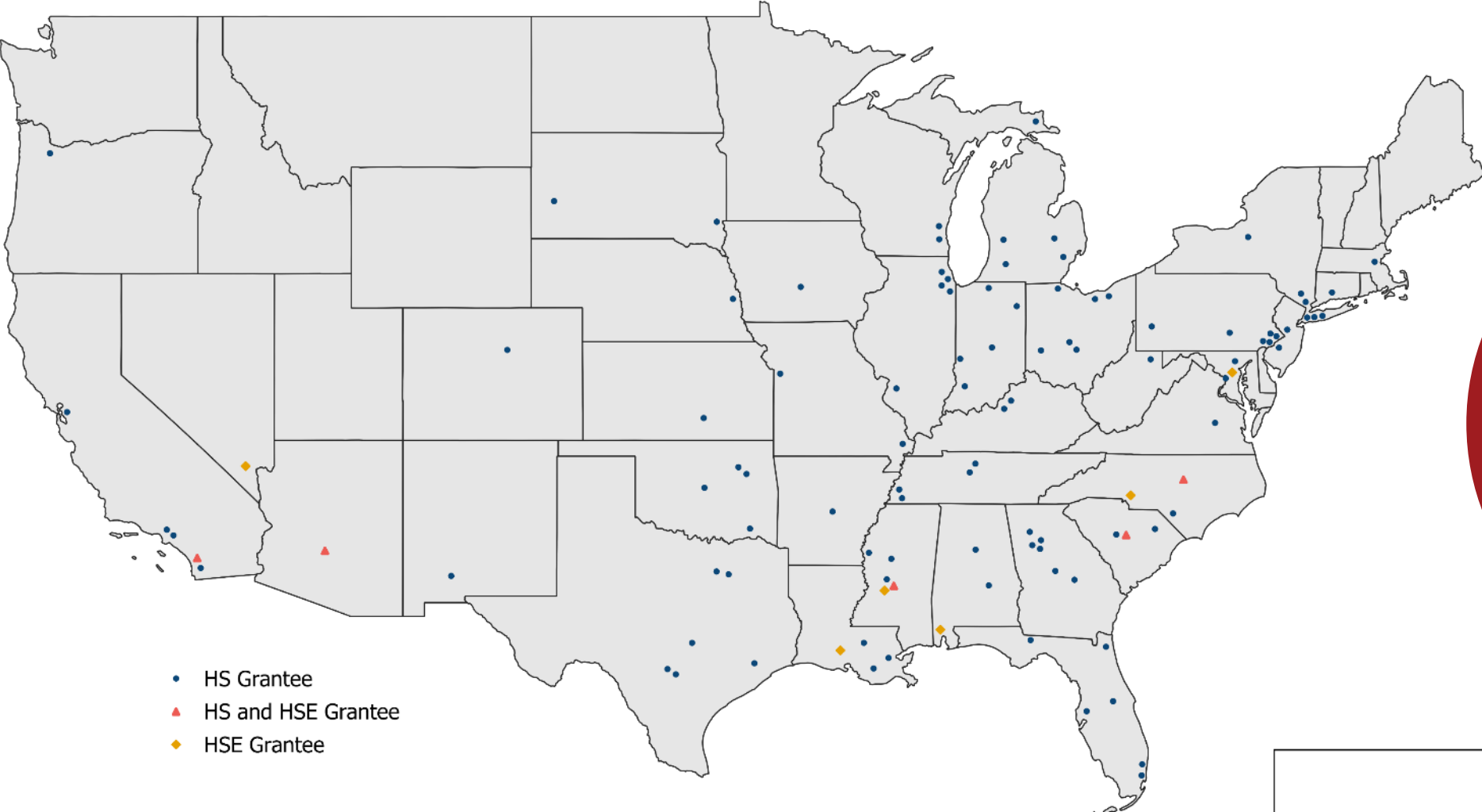


Learn more at <https://mchb.hrsa.gov>

5



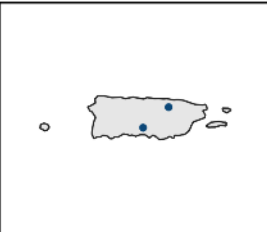
Healthy Start Grantees



- HS Grantee
- ▲ HS and HSE Grantee
- ◆ HSE Grantee

115
Total
Communities Served

The point locations displayed on this map have been adjusted to prevent overlap. While efforts have been made to maintain accuracy, these adjusted positions may not reflect exact geographic coordinates. Please use this map for general reference purposes only.



New Healthy Start Grant Recipients



Organization Name	City	State
ARHealth Ventures	Little Rock	AR
Volunteers of America	San Diego	CA
Cinq Care	Washington	DC*
Mary's Center for Maternal & Child Care	Washington	DC
North Broward Hospital Center	Fort Lauderdale	FL
Georgia State University Research Foundation	Atlanta	GA
Southside Medical Center	Atlanta	GA
Wellstar Health System	Marietta	GA
Memorial Hospital of South Bend	South Bend	IN
Black Birth Justice	Louisville	KY

* Serves NY, ** Serves MS

Learn more at <https://mchb.hrsa.gov>



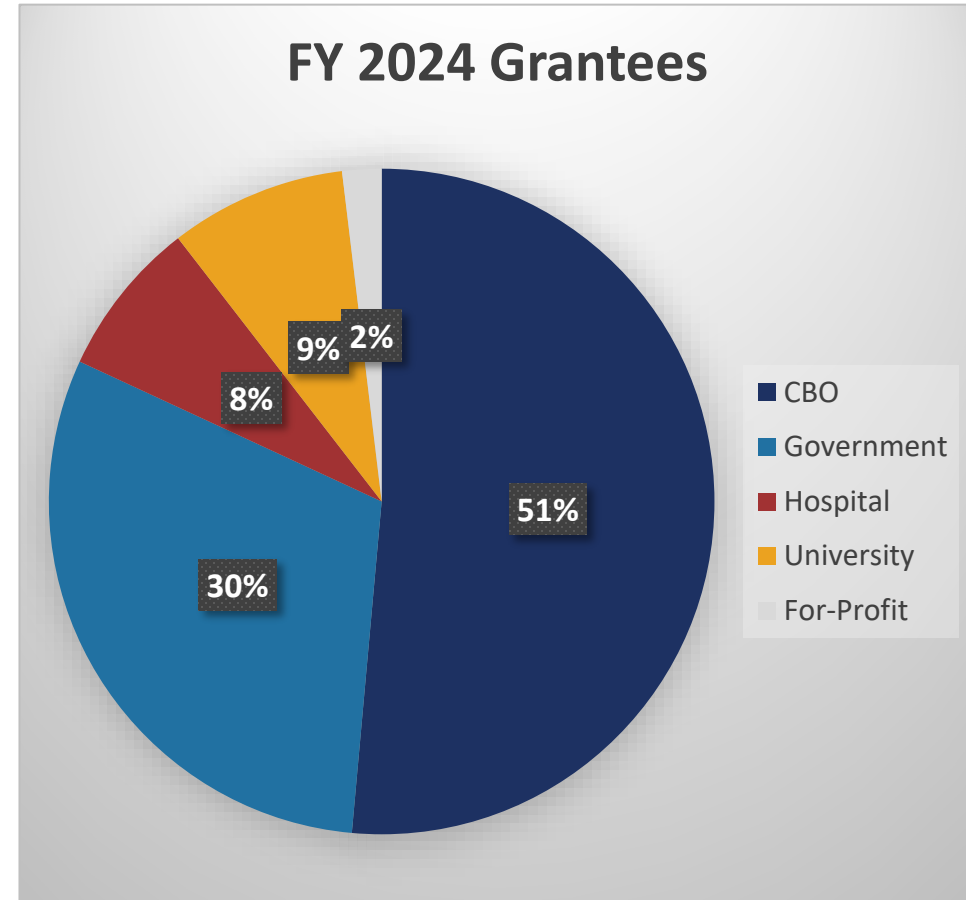
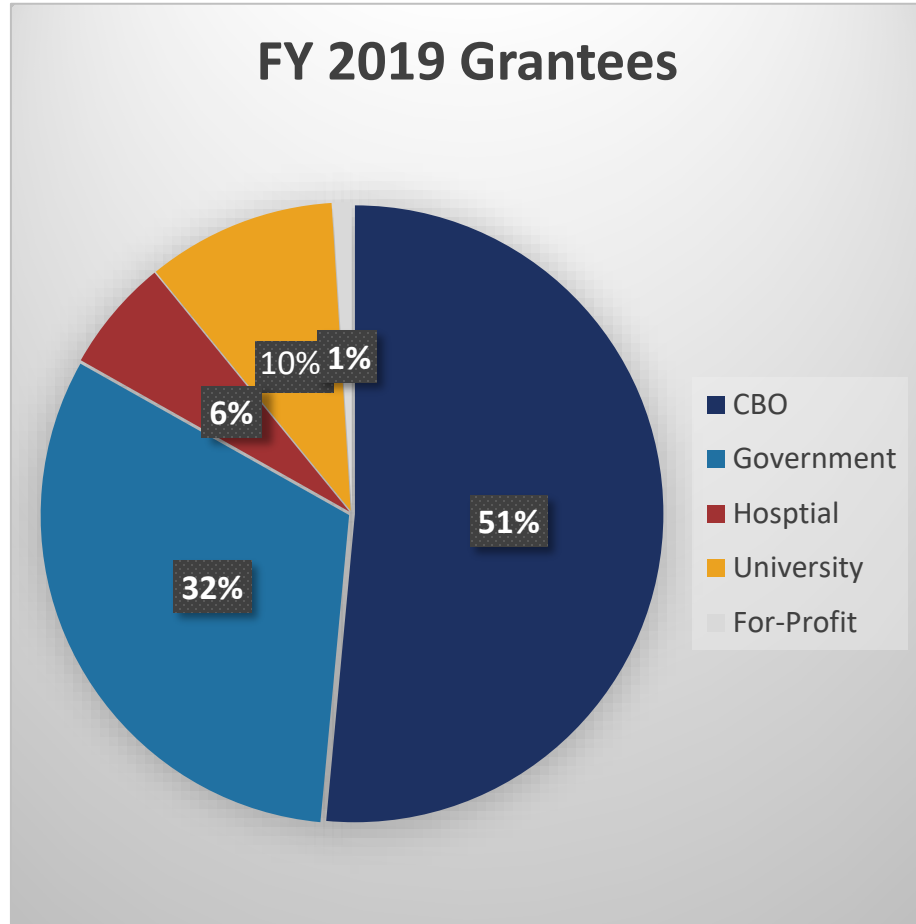
New Healthy Start Grant Recipients - Continued



Organization Name	City	State
Start Corp	Houma	LA
Plan A Health	New York	NY**
Lorain County	Elyria	OH
Research Institute a Nationwide Children's Hospital	Columbus	OH
Grupo Nexos	San Juan	PR
Avera Mckennan	Sioux Falls	SD
Shelby County Health Care Corporation	Memphis	TN
Shelby County Government	Memphis	TN
Black Mamas Community Collective	Austin	TX
Dallas County	Dallas	TX
Harris County	Houston	TX
UniteMKE	Milwaukee	WI

Learn more at <https://mchb.hrsa.gov>

Awardees by Type – FY 2019/FY 2024 Grantee Comparison



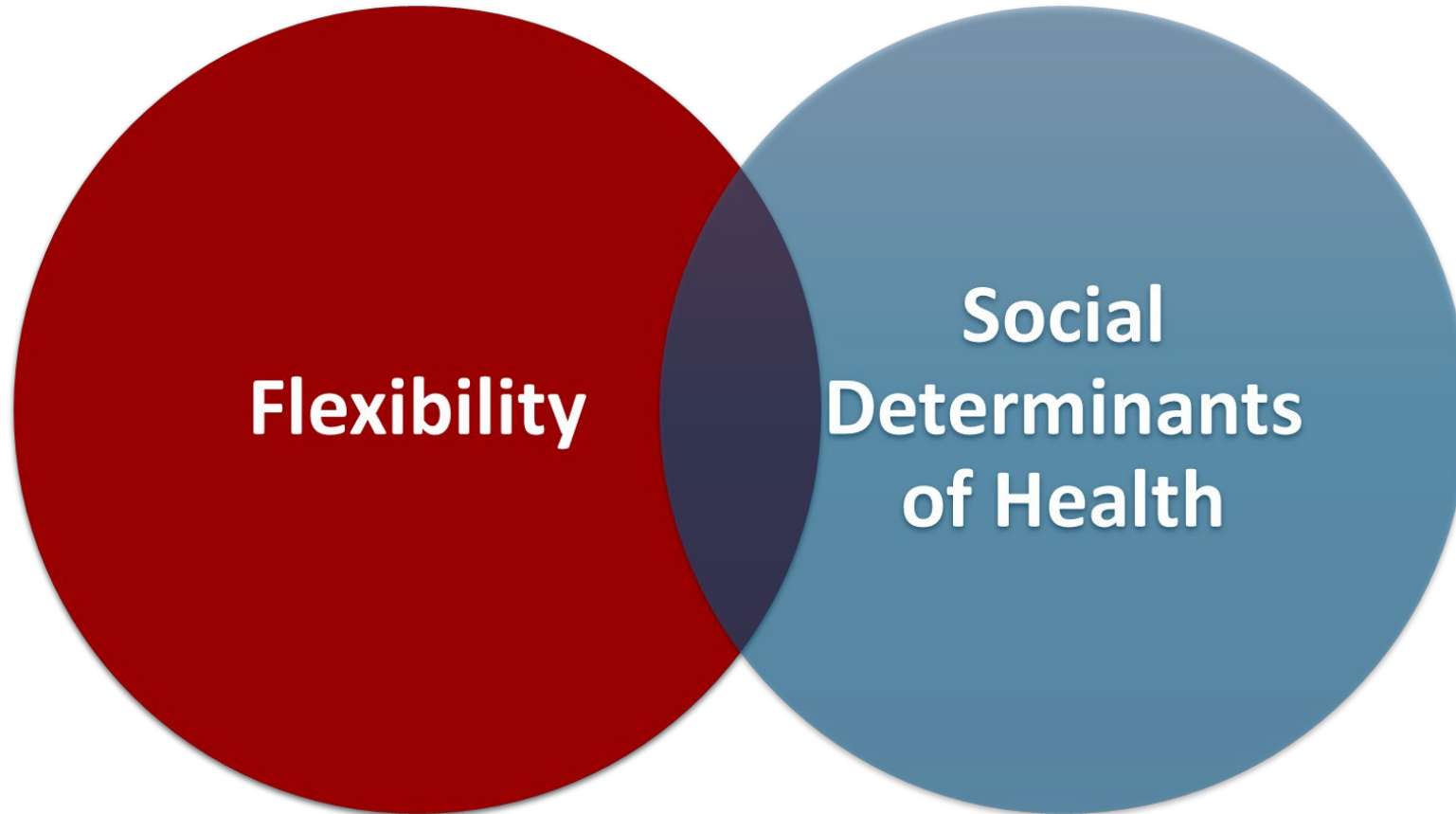
Overview of FY 2024 Healthy Start

Learn more at <https://mchb.hrsa.gov>

10



Healthy Start Overarching Priorities

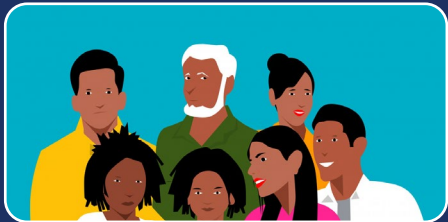


Direct and Enabling Services - Continuum of Services



Case Management/Care Coordination

- Family centered and strength-based



Group-Based Health and Parenting Education

- Robust learning and supportive connections



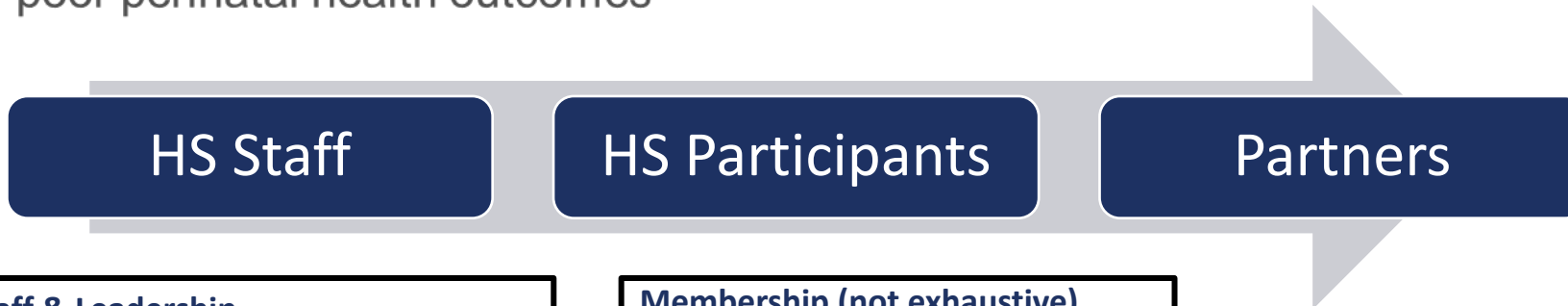
Clinical Services

- Maternal and child health advanced practice professionals (e.g., certified nurse midwives)

Health Promotion

Community Consortia

A group of diverse representatives across the community working to address pressing issues and needs that may lead to poor perinatal health outcomes



- Staff & Leadership**
- Community Consortium Coordinator (from and representative of the community)
 - Co-Chair (should be a current or former Healthy Start participant)

- Membership (not exhaustive)**
- 25 percent enrolled HS participants/people with lived experience in the project area
 - Title V
 - Public health departments
 - Health centers
 - Community leaders

Social Determinants of Health



Summary of Key Changes & Areas of Increased Emphasis



Learn more at <https://mchb.hrsa.gov>

14



Direct and Enabling Services – Summary of Key Changes/Areas of Increased Emphasis

Types of Services

- Group-based health and parenting education
- Clinical funding to support advanced practice maternal and child health professionals

Social Determinants of Health (SDOH)

- HS projects address SDOH as part of a continuum of services
- Referrals and linkages to clinical care and support services addressing SDOH

Flexibility

- Emphasis on grantee specific strategies and interventions
- Participation and leadership in initiatives at the state/local/community levels

Community Consortia – Summary of Key Changes/Areas of Increased Emphasis

SDOH

- Work is guided by a plan addressing SDOH within the community
- Opportunities for Community Consortia Coordinators to participate in technical assistance opportunities related to housing, food insecurity and transportation

Family and Community Engagement

- Consortia advise and inform the planning and implementation of HS services
- Consortia Coordinators are representative and from the community
- Chair/Co-Chair are current or former HS participants
- 25 percent of membership are current/former HS participants and community members

Flexibility

- Consortia plans address SDOH reflect key drivers of infant mortality within grantees' communities

Data, Evaluation and Monitoring – Summary of Key Changes/Areas of Increased Emphasis

HS Benchmarks

- 10 HS Benchmarks

Flexibility

- Internal or external evaluator

Reduce Burden

- Quarterly data submissions

Contact Information

Benita Baker, MS

Healthy Start Branch / Division of Healthy Start and Perinatal Services

Maternal and Child Health Bureau (MCHB)

Health Resources and Services Administration (HRSA)

Email: bbaker@hrsa.gov

Web: mchb.hrsa.gov



Connect with HRSA

Learn more about our agency at:

www.HRSA.gov



[Sign up for the HRSA eNews](#)

FOLLOW US:

